

HON

Make your space work®



Build™
Education

Create More. Connect More. Build More.

Learning without Boundaries.

Inspiring the next generation takes a higher degree of mobility and hands-on learning. The Build™ series, an educational product collection of tables, student desks, and seating, is lightweight, durable, and reconfigurable to meet the lesson plan of the day. Build encourages creativity and adaptability so students can support collaboration and social interaction or create personal space for focused study time. Build supports the movers and shakers, the hands-on doers, and the leaders who crave creativity. The future of education takes shape with Build.



SCAN TO
CHECK OUT
BUILD ON
HON.COM



Shown with SmartLink® Seating and Whiteboards, and Class-ifi™ Storage.

Desks



The Shape of Things to Come.

Brainstorming. Attentive listening. Idea sharing. Learning comes in many forms, and your classroom needs the flexibility to support them all. Build student desks designed with unique top shapes that allow them to adapt to changing needs throughout the day. With countless combinations, you can choose the right shape, size and finish to fit any space, aesthetic and budget.



Shown with SmartLink®, Tangram™, and Confetti™ Seating and Class-ifi™ Storage.



Shown with SmartLink® Seating and Storage, Flock®, and Skip™.

Tables



Pick a Space. Then Gather Around.

Projects. Hands on Activities. Cram sessions. Today's student body is learning together, working in groups and interacting like never before. Build a better sense of community by giving everyone a seat at the table. Group them together to form clusters, serpentine rows, collaborative configurations or all of the above. It's the ultimate multiple choice answer for today's ever evolving active learning spaces.



Makerspace Tables

For Students and Teachers. For Doers and Makers.

Crafts, construction, tinkering and exploring. Let imaginations run wild while the makerspace table supports all ideas. Get messy, hammer out the details, and deliver innovation. Durability and reconfigurability is what the Makerspace table is best at. This is your space to build. Organize. Inspire. Grow. Do.

Available in butcher block or laminate tops

End panels are available in multiple paint colors
Choose from slotted pegboard or solid end panels. Try using a markerboard for additional functionality or hang-on accessories to keep things tidy.



Storage & Organization
Deck out your table with optional Fuse™ accessories to add to end panels, or 3", 6", and 12" SmartLink® storage bins for keeping your space clean.

Three Height Options
Standing-, counter- and seated-heights offer a range of usability for every learning space



Shown with SmartLink® Seating, Storage and Whiteboard.



Shown with Fuse™ Accessories, SmartLink® Storage and Whiteboard.

Makerspace Stools

Short Seat. Tall Seat.

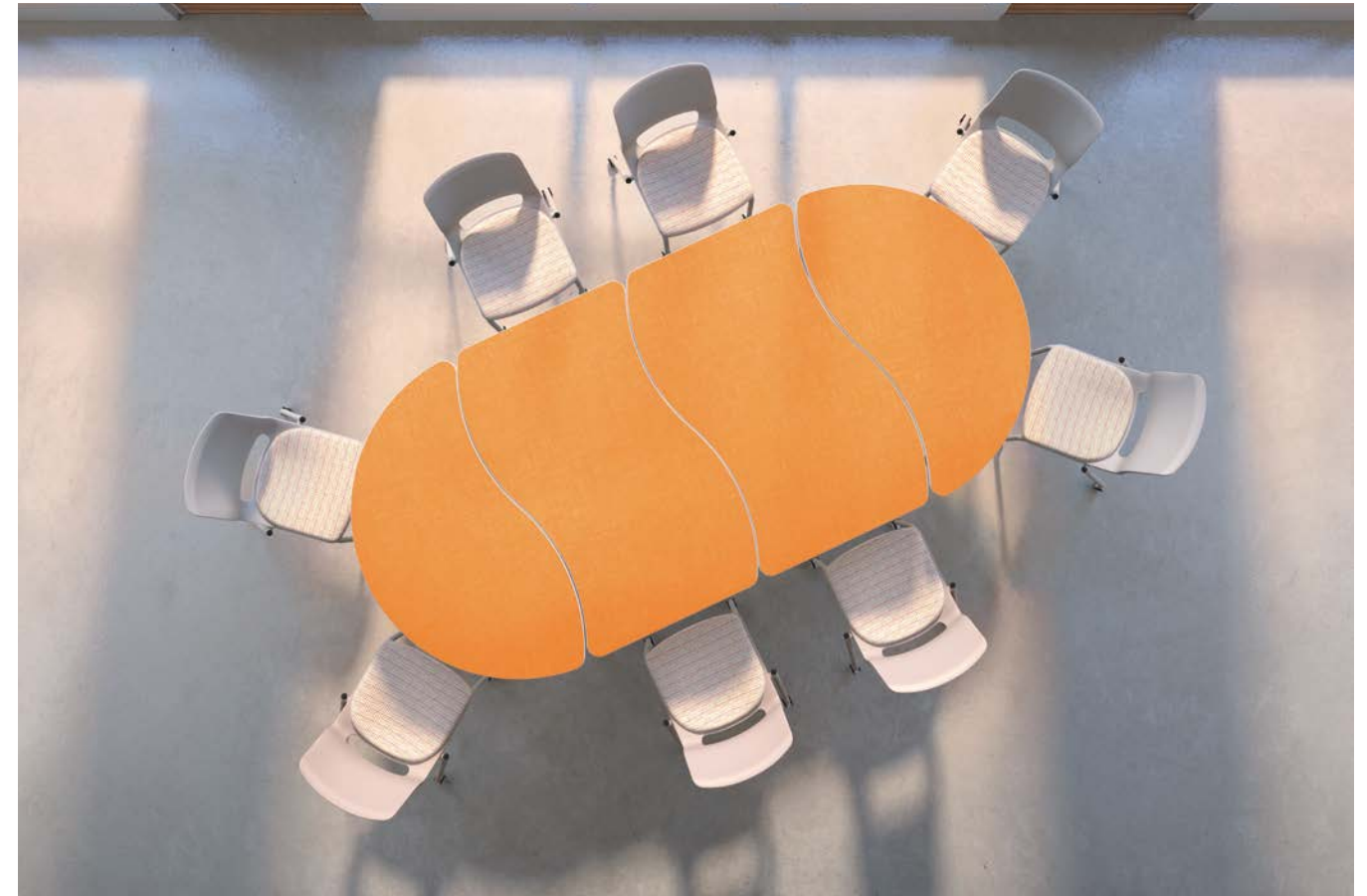
Red seat. Blue seat. Brighten any space with lightweight and stackable stools. Durable enough for projects, pounding, and paint. Build Makerspace stools give flexibility to adapt any working space and provide a supportive sit for doing and making.



Learning in The Workplace

Whatever the Task. Wherever the Setting.

From open areas and training rooms to collaborative spaces between, Build meets your needs on your terms. Looking for a short-term parking outside the workstation? No problem. Training a group of new employees? Just say when. Build gives you total control over your environment, from the table configurations to the way they express your brand and style.



COMMONS

A one-on-one meeting. Followed by a group discussion. Then a quick conversation over lunch. Active areas do it all, as long as the spaces are designed to keep up.



TRAINING

From small to large group instruction, every training session is supported by Build. Each lightweight, mobile table can be easily repositioned and reconfigured to fit any need.



BREAKOUT

Sometimes you just have to break away. Position Build tables near desks to give workstation warriors a convenient retreat, informal meeting spot or change-of-pace work area.

Build Statement of Line

Student Desks

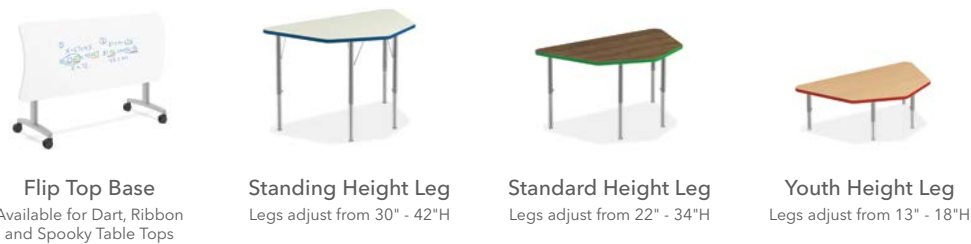
Legs adjust from 22" - 34"H



Tables



Table Bases



Options



Mix and Match Laminate and Edgeband



Platinum



Black



Backpack Hook



Book Box & Bracket

Desk and table legs are available in Platinum or Black finish. Order optional casters on tables for added mobility.

Table & Desk Accessories

Visualize and customize your Build desk or table on the education product configurator at hon.com/configurator/education.

Makerspace Stools



Seated-Height Café-Height

Makerspace Tables



Seated-Height
42"x60", 42"x72"
Available with Laminate or Butcher Block Tops

Counter-Height
42"x60", 42"x72"
Available with Laminate or Butcher Block Tops

Standing-Height
42"x60", 42"x72"
Available with Laminate or Butcher Block Tops

Makerspace Table Accessories



Slotted Pegboard End Panels
Optional for seated-, counter- and standing-height tables



Solid End Panels
Optional for seated-, counter- and standing-height tables



Shelf and Dividers
Optional for standing-height tables only

SmartLink® Storage Bins



Optional for seated-, counter- and standing-height tables with slotted pegboard end panels

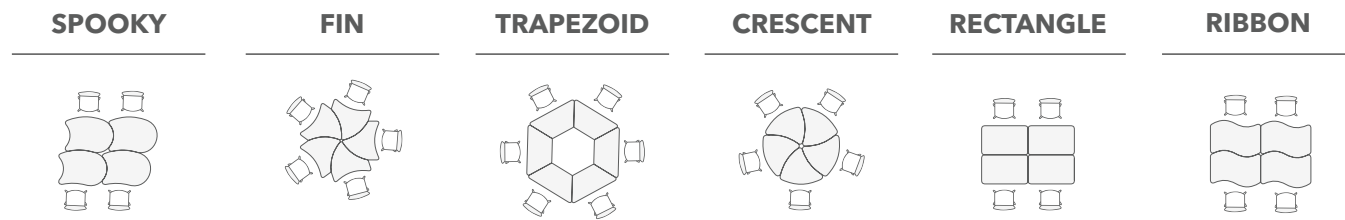
Fuse™ Hanging Accessories



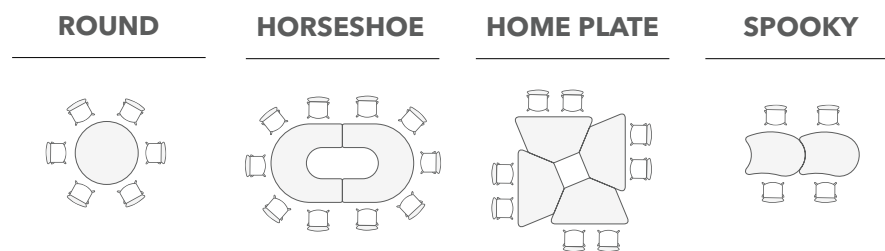
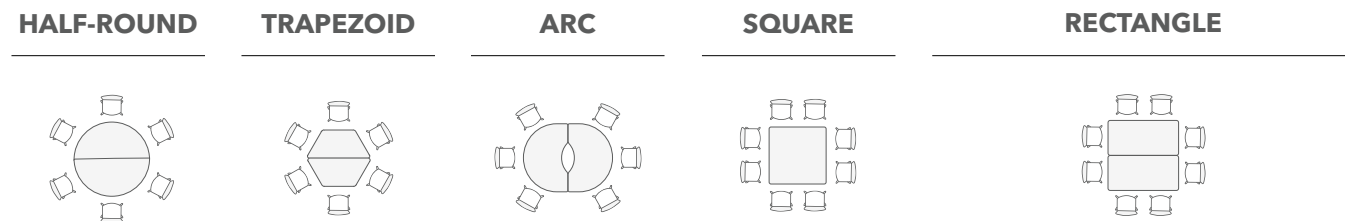
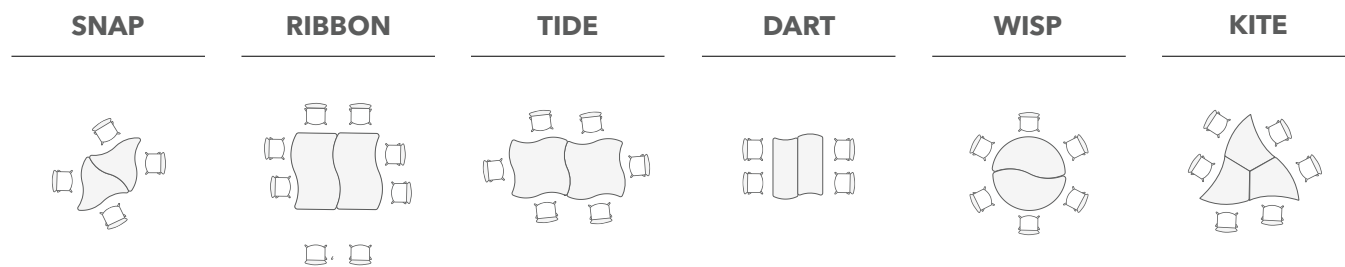
Optional for seated-, counter- and standing-height tables with slotted pegboard end panels

Configurations

Student Desks



Tables

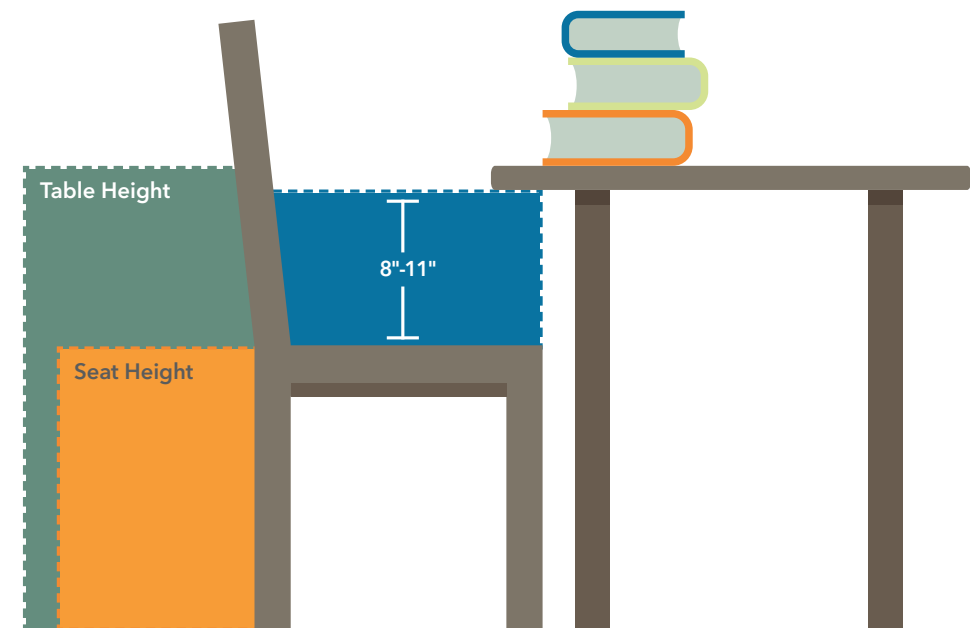


Seating Chart

Find the Right Fit

Comfort and ergonomics matter in the classroom. Picking the right chair for your table or desk should be easy and seamless. When students are positioned correctly, learning begins. Ensure students have the right amount of knee space between the seat and the bottom of the table so arms can rest comfortably on top of the table and the knees form a 90° degree angle. Pair Build desks and tables with Build stools or other HON education seating series such as SmartLink® or Motivate®.

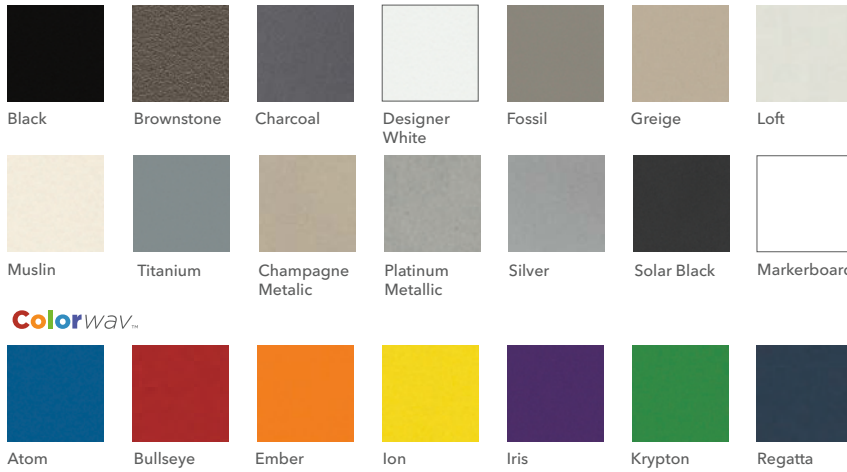
Recommended space from chair seat to underside of table is 8"-11"							
Seat Height	6"	12"	14"	16"	18"	24"	30"
Table Height	14"	22"	24"	27"	29"	36"	42"
Pre-K							
Kindergarten - Grade 1							
Grade 2 - 4							
Grade 5 - 12							





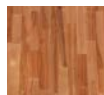
Finishes

Paints



Laminates and Butcher Block



 It's easy and fun to tailor your Build tables and student desks with HON's Open Line Laminate Program!

Butcher Block

Edge

